



## IICL - TB 016, January 11, 2019

**Title:** Roof measurement of outwards deformations.

**Reference:** This technical bulletin (TB – 016) addresses the measurement technique to be applied during inspection of outward roof panel deformation on for dry van containers.

**Purpose:** Amend the *IICL Guide for Container Equipment Inspection 6<sup>th</sup> Edition* with regards to the location used as reference to measure roof outward deformations in order to facilitate the inspection process. This bulletin applies to dry van containers.

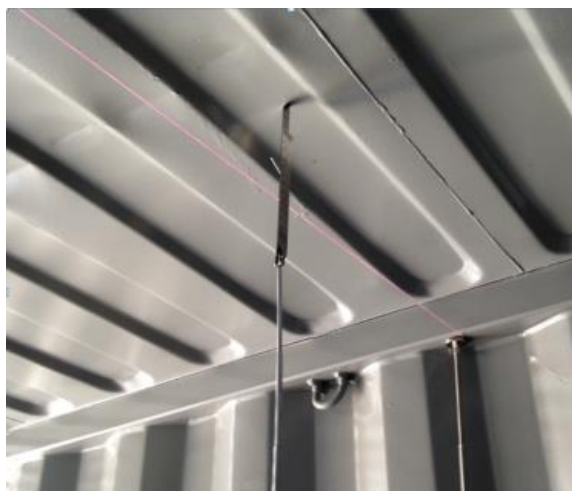
**Clarification:** The roof outward tolerance shown on table 5.5 remains the same, 40 mm (1- 9/16 in), changes affect the measurement technique only.

**Amendment:** In order to facilitate the inspection of outward roof damages the reference point to be used for tube and flat bar types is hereby changed from the top face of the side rail to the lower face of the top side rail.

- ❖ On tube type top rails, if the damage measured from the lower face of the top side rail to the roof panel recessed corrugation exceeds 100 mm (4 in), repair is required.
- ❖ On flat bar type top side rails, if the damage measured from the lower face of the top side rail to the roof panel recessed corrugation exceeds 55 mm (2- 9/16 in), repair is required.

**It is recommended that the following photo and drawings be cut out and affixed on top of the corresponding pages on the IICL 6<sup>th</sup> edition inspection guide:**

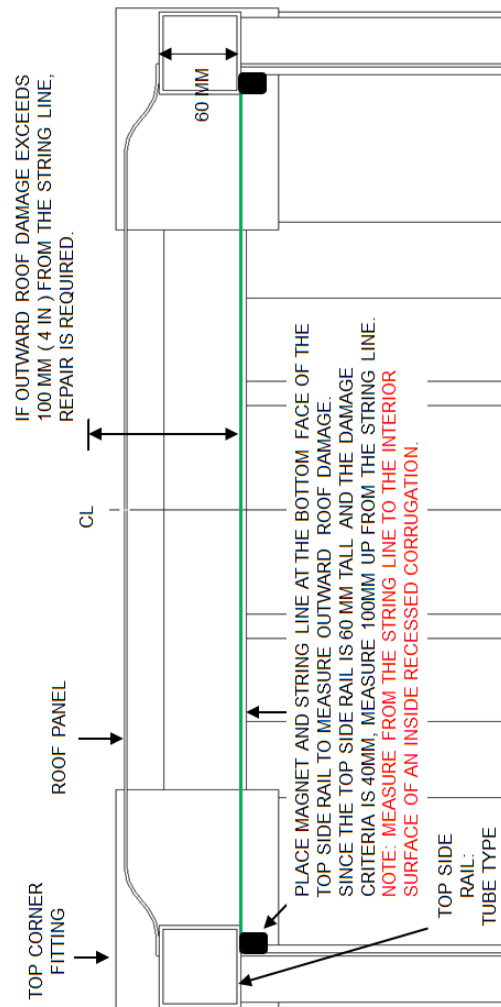
- Photo – page 51
- Drawings – tube type – page 67
- Drawings – flat bar type – page 71



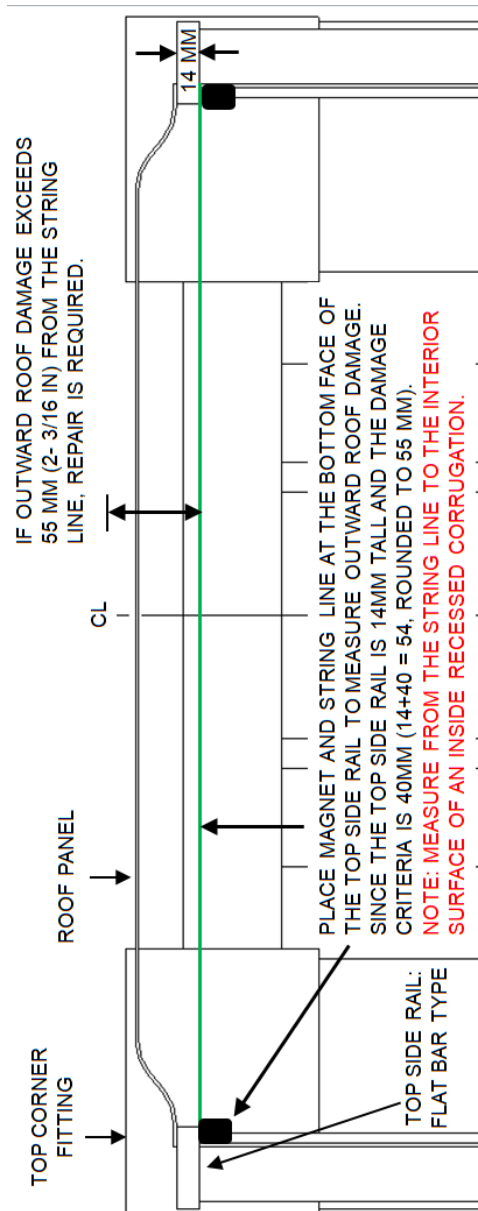
**NEED TO REPAIR UNDERTERMINED**

If upward dent is more than 100 mm (4 in) above the lower face of the top side rails, repair is required.

### Measuring Outward Roof Damage Criterion Tube Type Top Side Rail



**Measuring Outward Roof Damage Criterion  
Flat Bar Type Top Side Rail**





*INSTITUTE OF INTERNATIONAL CONTAINER LESSORS*

For questions about this technical bulletin you may contact [technical@iicl.org](mailto:technical@iicl.org)